

**A perfect  
mix of**

*power and cleanliness*

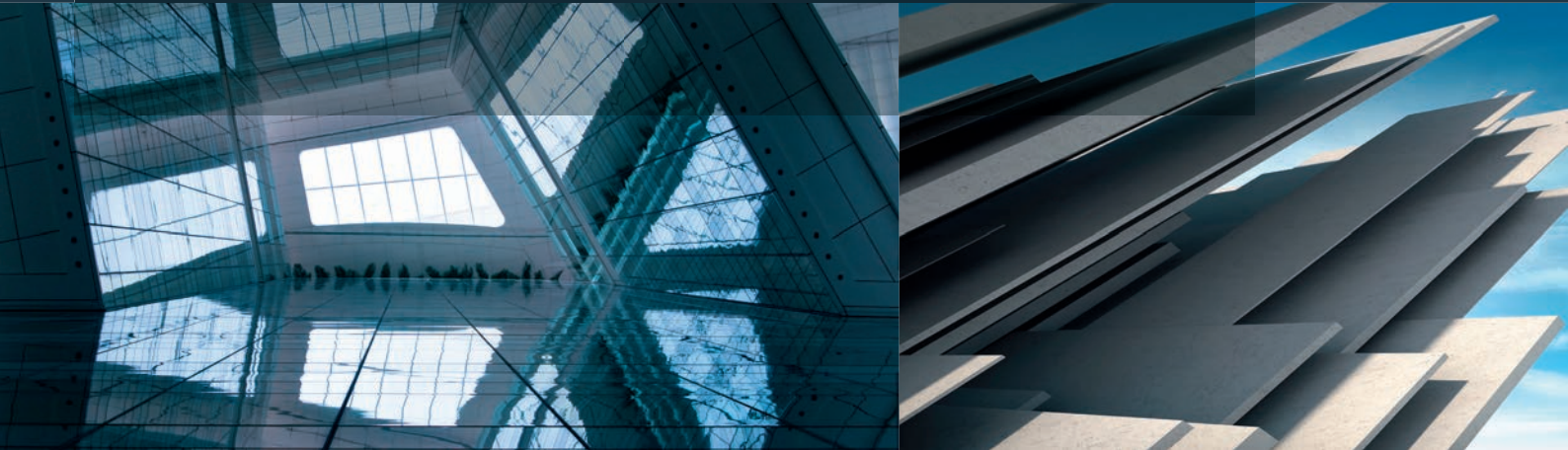
 **Pemat**



**High pressure wash-out system** from Pemat

# MIX.ING.

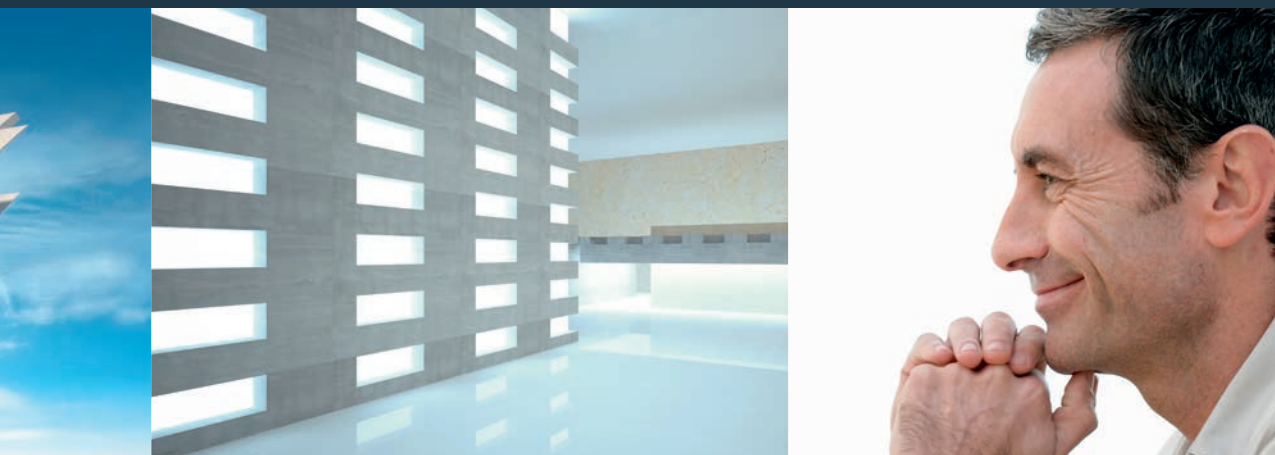
Mixing Technology made in Germany



MIX.ING. stands for our philosophy of reasoned and perfected mixing technology processes. This is a philosophy we live by and involve in every detail of our products.

We produce High pressure wash-out systems for:

- Planetary mixer
- Rotating Pan mixer
- Conical mixer
- High Speed Pan mixer



## Why Pemat? **Know-how, quality and customer focus**

With over four decades of experience in the development and manufacture of mixing technology products, today we are innovative leader in the areas of mixers, skip hoists and complete mixing plants. Our know-how enables us to help our clients optimise their processes, ensure quality, save raw materials and decide on the optimum mixture for every demand. Our products are developed and produced exclusively in Germany, in a resourceful way and sold all over the world.

## Service from Pemat. **24 hours a day – seven days a week**

We ensure the special quality and long-term availability of our products with a demanding quality control system. With our highly-qualified sales and support team we support our clients both before and after purchase with words and deeds – 24 hours a day– seven days a week.

- Twin-shaft mixer
- Single-shaft mixer

# PHR

## High pressure wash-out system from Pemat

Maximum cleaning at low water consumption through the rotating Pemat 3D spray head system



3D spray head

### The 3D cleanliness

For decades we have been setting standards with our high pressure wash-out systems in terms of cleanliness, reliability, operation and efficiency.

The special Pemat 3D spray head system allows the spray head to rotate around their own axis so that even tenacious dirt can be completely removed. And that individually adapted to the needs of the customer.

No matter what brand, whether planetary mixer, high speed pan mixer, twin-shaft mixer or whether it is only about the cleaning of concrete bucket, concrete distributor or discharge outlet cone - we offer a tailor-made wash-out system that will convince you.

### The configuration

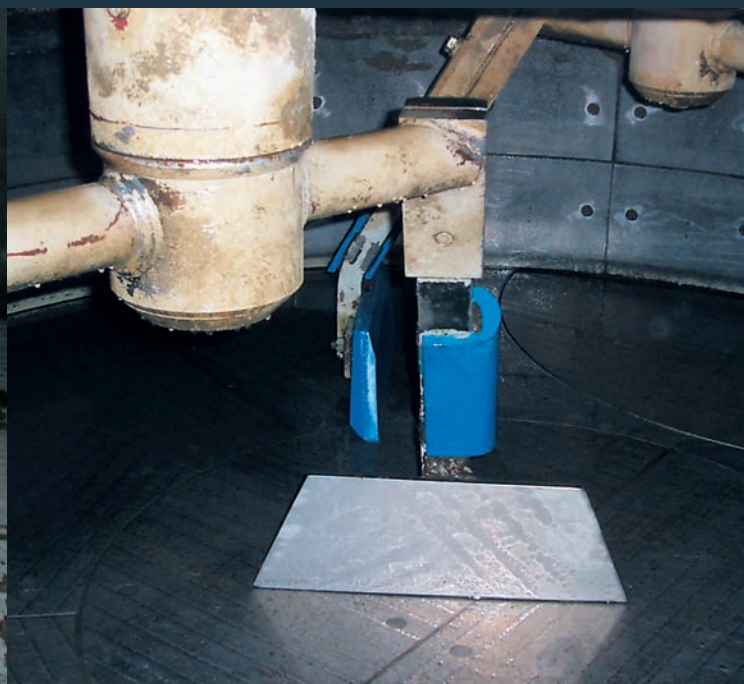
The 3D spray heads and optional hand lances are powered by one or more high pressure pumps depending on the required power.

- The pumps, the valve units and the optional float chamber (200 l) are completely mounted on just one frame.
- All media touched parts are made of stainless material.
- On request, the control cabinet with on-site operation is positioned directly on the frame or optional in a predetermined location.
- Operation of the high pressure wash-out system is possible either by push-button at the on-site operation or from the plant control.





Before cleaning



After cleaning

## The cleaning

The Pemat High pressure wash-out system uses two cleaning stages:

- In the cleaning stage **intermediate cleaning**, the spray heads make a complete three-dimensional turn in 3.2 minutes.
- In the cleaning stage **main cleaning**, the mixer is thoroughly cleaned. For this purpose, the spray heads make two three-dimensional turns in 6.4 minutes. The cleaning times are flexible and can be extended or shortened individually on request.

A special advantage is that in case of frost the Pemat High pressure wash-out system offers the option of quickly and easily draining the water and furthermore it would be possible to blow out the piping by compressed air in order to avoid damages to the unit. And on request fully automatically by pressing a button.

## Advantages

- Optimal cleaning effect
- Simple operation
- Low maintenance
- Sturdy
- High efficiency
- Compact
- Flexible

# Perfectly matched

## The High pressure wash-out system from Pemat

### The Pemat High pressure wash-out system in details:

- Pump unit
- Water tank (optional)
- Valve(s)
- Spray heads
- Hand lance (optional)
- Water supply system
- Control cabinet
- Terminal box



Pump unit with control cabinet

## The efficiency

Using an automatic Pemat high pressure wash-out system can save up to 50% of the amount of water compared to manual cleaning. Particularly in the production of high-quality concrete products, in which the mixers have to be cleaned several times a day, the costs for water supply can be significantly reduced.



Before and after cleaning with the PHR

## The lay out design

- Requested number of spray heads depends on type of mixer and model (see table).
- In the cleaning stage **intermediate cleaning**, up to three spray heads can be supplied with water at the same time with one pump.
- In the cleaning stage **main cleaning**, up to three spray heads can be supplied with water at the same time with one pump.
- For mixers with more than three spray heads, the Pemat High pressure wash-out system can optionally be equipped with more pumps or the cleaning cycle can be divided into more cleaning circuits. With more cleaning circuits, the time of a cleaning cycle is extended by the number of cleaning circuits.

## Technical details High pressure wash-out system Planetary- and High Speed Pan mixer

Model	250	375	500	750	1125	1500	1875
Number of spray heads	3	3	3	3	4	4	4
Number of pump unit kW	1 x 11	1 x 11	1 x 11	1 x 11	1 x 11	1 x 11	1 x 11
Number of pump unit kW	-	-	-	-	2 x 11	2 x 11	2 x 11
Intermediate- and main cleaning with 1 pump min.	3.2-6.4	3.2-6.4	3.2-6.4	3.2-6.4	6.4-12.8	6.4-12.8	6.4-12.8
Intermediate- and main cleaning with 2 pumps min.	-	-	-	-	3.2-6.4	3.2-6.4	3.2-6.4
Water consumption per cycle, liter	131-262	131-262	131-262	131-262	175-350	175-350	175-350
Dry filling max. liter	250	375	500	750	1.125	1.500	1.875
Dry filling max. kg	400	600	800	1.200	1.800	2.400	3.000

Model	2250	3000	3375	3750	4500	5250	6000
Number of spray heads	4	5	5	6	6	6	6
Number of pump unit kW	1 x 11	1 x 11	1 x 11	1 x 11	1 x 11	1 x 11	1 x 11
Number of pump unit kW	2 x 11	2 x 11	2 x 11	2 x 11	2 x 11	2 x 11	2 x 11
Intermediate- and main cleaning with 1 pump min.	6.4-12.8	6.4-12.8	6.4-12.8	6.4-12.8	6.4-12.8	6.4-12.8	6.4-12.8
Intermediate- and main cleaning with 2 pumps min.	3.2-6.4	3.2-6.4	3.2-6.4	3.2-6.4	3.2-6.4	3.2-6.4	3.2-6.4
Water consumption per cycle, liter	175-350	219-438	219-438	262-524	262-524	262-524	262-524
Dry filling max. liter	2.250	3.000	3.375	3.750	4.500	5.250	6.000
Dry filling max. kg	3.600	4.800	5.400	6.000	7.200	8.400	9.600



● Pemat products – in action worldwide