

A perfect  
mix of  
*rotation & intelligence*

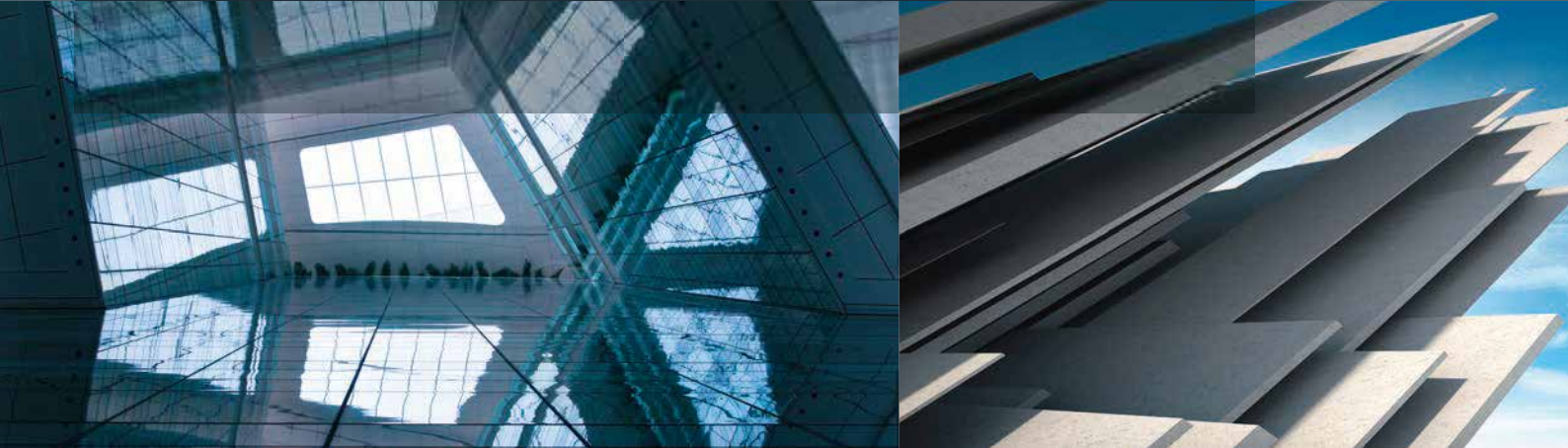
 Pemat



Planetary mixer from Pemat

# MIX.ING.

Mixing Technology made in Germany



MIX.ING. stands for our philosophy of reasoned and perfected mixing technology processes. This is a philosophy we live by and involve in every detail of our products.

We produce Planetary mixer for:

- Ready mixed concrete
- Mortar
- Lime stone
- Precast concrete
- Roof Tiles
- Glass industry



## Why Pemat? **Know-how, quality and customer focus**

With over four decades of experience in the development and manufacture of mixing technology products, today we are innovative leader in the areas of mixers, skip hoists and complete mixing plants. Our know-how enables us to help our clients optimise their processes, ensure quality, save raw materials and decide on the optimum mixture for every demand. Our products are developed and produced exclusively in Germany, in a resourceful way and sold all over the world.

## Service from Pemat. **24 hours a day – seven days a week**

We ensure the special quality and long-term availability of our products with a demanding quality control system. With our highly-qualified sales and support team we support our clients both before and after purchase with words and deeds – 24 hours a day– seven days a week.

- Generating plant
- Chemical
- Environmental waste
- Refractory concrete

# The Planetary mixer from Pemat

Perfect mixing technology for perfect results

## Drive unit

- Heavy duty gear box
- Drive motor with 3 thermistor overload sensors
- Long service life with low maintenance cost
- Smooth operation
- Frequency converters for speed control
- Electronic soft start control to protect the drive elements

## Mixing tools

- Protective coated mixer arm mountings and positioning elements
- Mixer and scraper arms on nylon lined bearings
- Spring steel mixer arms and mixer stars
- Wear sleeves
- Very long service life
- Mixing blades made of synthetics, hard cast steel or hard metal coated

## Mixing pan wear linings

Available in various materials:

- Steel plate
- Hardox steel plate
- Pemadur hard faced steel
- Special chill cast tiles
- Polyurethane





## Protection cover

- Four large segments
- The individual segments can be opened easily either manually or by lifting systems
- Mixer safety device provide great operational reliability
- Special rubber sealing for dust free operation
- Generous inspection flap
- 

## Mixer safety device

Comprising of:

- Hinged protection cover segments
- Lateral inspection door
- Mixing process inspection flap
- Discharge protection

## Discharge

- Hydraulically operated
- Fast clean discharge
- Up to 4 discharge outlets possible
- Part opening possible
- Discharge protection for health and safety
- Individual pivoting or telescopic discharge chutes with wear lining in steel, polyurethane or rubber

# The models

## Planetary mixer from Pemat



## The PMP

### Planetary mixer

Designed to meet the most stringent demands in mixing technology the PMP model provides high levels of homogenisation and repetition. Also available as light or compact version.

#### Its advantages:

- Compact
- Sturdy
- Reliable
- Long lifetime

## The PMPR

### Planetary mixer with additional whirler

The discontinuous whirler makes almost any mixing task possible.

#### Its advantages:

- Good distribution of the mix including fine grained materials
- Fast homogenisation
- Accurate repetition
- High energy efficiency



## The PMPM

### Multimix Planetary mixer with additional, independently controlled whirler

Independently controlled and infinitely variable rotor and whirler speed guarantee practically perfect mixing and reveal the future for mixing technology.

#### Its advantages:

- Excellent distribution of the mix including fine grained materials
- Ultra-fast homogenisation
- The greatest possible repetition
- Very high energy efficiency



Skip hoists

## Accessories

### All Pemat Planetary mixers can be equipped with the following accessories:

- Skip hoists
- High pressure wash-out system
- Moisture metering
- Camera attachment
- Cooling / drying



High pressure wash-out system

# The PMP

## Planetary mixer



PMP 3000 with open segments



Discharge PMP 3000

The PMP Planetary mixer is an uncomplicated and sturdy mixer that is setting standards with its reliability and durability. Its compact method of construction, the service free layout of all the components and its high quality equipment make it a trustworthy mixer for rough daily operations.

### **What makes the Planetary mixer from Pemat stand out?**

The access door in the mixer wall makes the PMP easy to clean and service. All the mixer arm mountings and positioning elements are located inside the gear housing for protection from dirt. The mixing and scraper arms are mounted on bearings under spring tension and can be adjusted both horizontally and vertically. The mixer arms are made from spring steel and can be provided with wear cuffs.

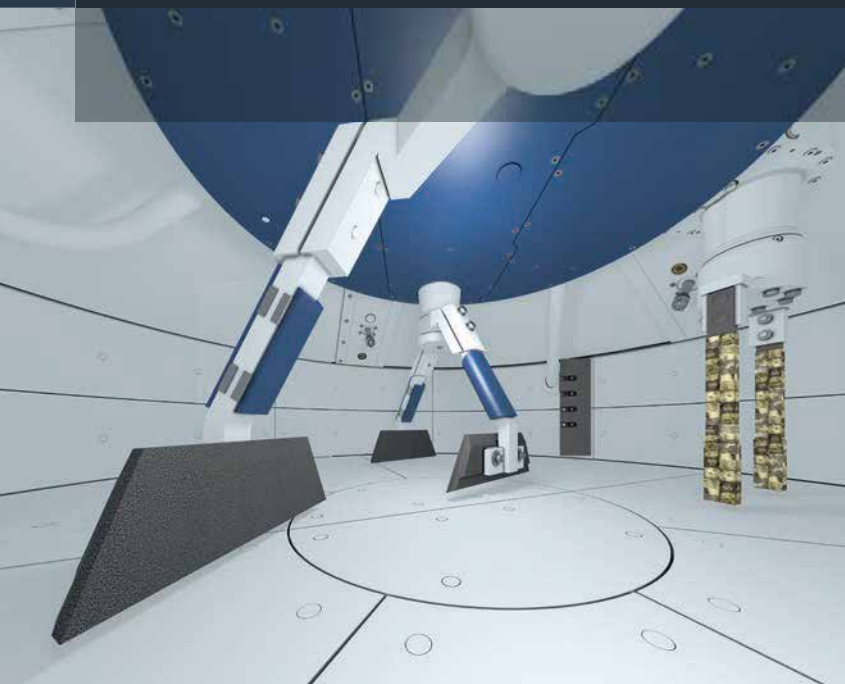
### **The PMP offers:**

- Long lifetime
- High operational safety
- Short mixing times
- Optimal mixing effect
- Exceptionally quiet operation
- Speed control by frequency converter
- Minimal contamination
- Low maintenance



# The PMPR

## Planetary mixer with additional whirler



PMP 3000 interior



PMP 3000

Concrete production nowadays places the greatest quality requirements on mechanical equipment. The homogeneity of the mixing process and the shortest mixing times are indispensable factors for economically viable mixing of the best possible quality. The Pemat Planetary mixer with additional whirler (patented) provides you the ideal equipment for handling practically any task.

### What is the difference between the PMPR and a conventional Planetary mixer?

The PMPR Planetary mixer has sturdy, specially developed precision gears enabling it to be equipped with an additional whirler at any time. The tools can be easily adapted to changing requirements without complications.

The peripheral speed is between 0–12 meters per second. The PMPR can also be equipped with a frequency converter to provide continuous control of speeds, depending on the recipe.

### The PMPR offers:

- Good distribution of the mix including fine grained materials
- Fast homogenisation
- Accurate repetition
- High energy efficiency
- High flexible speeds of mixer tools and whirler
- Efficient energy transfer into the product
- Minimal mixing quantities are possible
- Low contamination and build-up in the mixer
- Outstanding ability to produce high quality concretes: UHSC, SCC and face concrete

# The PMPM

Multimix Planetary mixer with additional, independently controlled whirler



PMPM 500



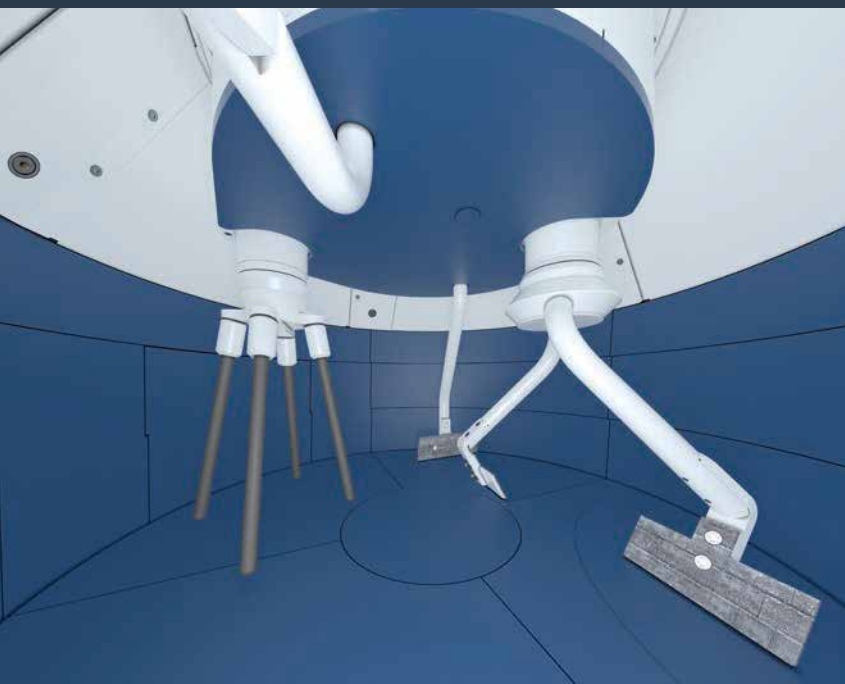
PMPM 500 with open segments

Recipes, aggregates, admixtures and colour are increasingly innovative and specialised. To get the best possible results they need to be mixed perfectly. This places the highest possible demands on a mixer which the PMPM surpasses in all respects. It sets a completely new standard for the quality of mixing results and reveals to the future for mixing technology.

## What is the difference between the PMPM Multimix Planetary mixer and the PMPR Planetary mixer with whirler?

The PMPM has 2 drive motors each with 3 thermo overload sensors, powering a specially developed precision gearbox. This special gearbox allows the rotor and whirler speeds to be varied, independently from each other. The whirler's direction of rotation can be independently alternated.

Tools can be quickly adapted both in the PMPR and the PMPM to meet changing requirements. The peripheral speed is between 0–12 meters per second. Two built-in frequency converters allow continuous adjustment of the rotational speed according to product requirement.



Independently controlled whirler



PMPM 500

## Independently controlled whirler



### The PMPM offers:

- Excellent distribution of the mix including fine grained materials
- Ultra-fast homogenisation
- The greatest possible repetition
- Very high energy efficiency
- High flexible speeds of mixer tools and whirler
- Efficient energy transfer into the product
- Minimal mixing quantities are possible
- Substantial reduction of waste batches
- Low contamination and build-up in the mixer
- Outstanding ability to produce high quality concretes: UHSC, SCC and face concrete



● Pemat products – in action worldwide