

**A perfect
mix of**
efficiency & security

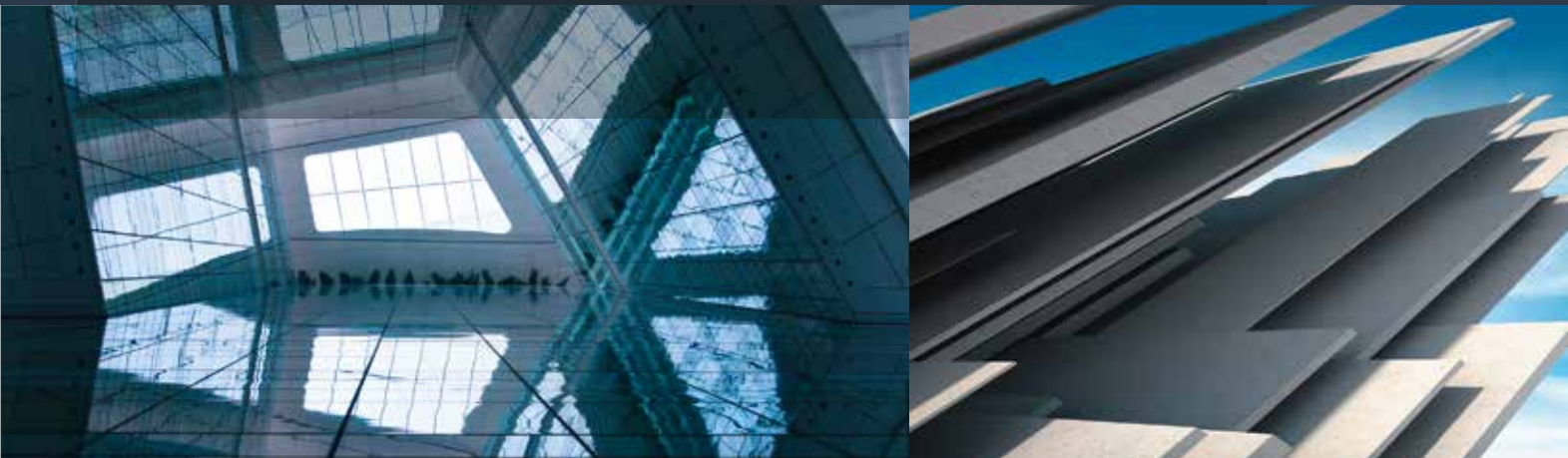
 **Pemat**



Skip Hoists from Pemat

MIX.ING.

Mixing Technology made in Germany



MIX.ING. stands for our philosophy of reasoned and perfected mixing technology processes. This is a philosophy we live by and involve in every detail of our products.

We produce Skip Hoists for:

- Sand
- Gravel
- Crushed rock
- Grit
- Fine material
- Compost



Why Pemat? **Know-how, quality and customer focus**

With over four decades of experience in the development and manufacture of mixing technology products, today we are innovative leader in the areas of mixers, skip hoists and complete mixing plants. Our know-how enables us to help our clients optimise their processes, ensure quality, save raw materials and decide on the optimum mixture for every demand. Our products are developed and produced exclusively in Germany, in a resourceful way and sold all over the world.

Service from Pemat. **24 hours a day – seven days a week**

We ensure the special quality and long-term availability of our products with a demanding quality control system. With our highly-qualified sales and support team we support our clients both before and after purchase with words and deeds – 24 hours a day – seven days a week.

- Mulch
- Recycled material
- Forage
- and lots more

PAS | PAK | PAKS

Skip Hoists from Pemat



Pemat skip hoists are available in three basic models and various different designs.

Suitable for almost every application, they can be used for loading mixers of every make or as a stand-alone loading unit.

Technical features

- Skip winch with geared drive motor (SEW) available in two different drive models
- Skip track available in standard or special inclination
- Special skip ropes of an appropriate length
- Skip buckets can be tailor made to suit almost any plant design
- Skip bucket wear lining in various materials
- Disassembly station for maintenance work on axles and rollers
- Proximity switches offer reliable control for skip travelling, discharge and skip position
 - Rope guard for monitoring rope condition and to prevent slack rope situations
- Protection cages according to General Regulations for prevention of accidents are available, if required



Skip hoist single winch

- One single layered rope drum
- One motor
- Single rope



Skip hoist double winch

- Two single layered rope drums
- Two motors synchronised by drive shaft
- If one drive unit fails the skip can continue with half speed and load
- Double rope
- Less rope wear
- Safety system designed to prevent bucket damage
- Synchronization through rope compensation

The geared motors are protected against overload with 3 temperature probes (thermistors) connected to a release unit. The disk brake operates with a rectifier and coil. Designed for this special application it will be reliable and operate successfully even in the most arduous conditions.

PAS

Skip Hoist standard with bottom discharge



Watch the Movie



PAS Standard skip hoist with bottom discharge

- Standard inclination 60°, special inclinations from 30° to 75° are available
- Standard-speed upwards 0,4 m/s and 0,8 m/s downwards, or upwards 0,4 m/s and 0,4 m/s downwards
- Drive unit with one geared motor, ventilated disk brake, single layered rope drum, available with frequency converter for infinitely variable speed
- Electronic rope monitor for safe operation

The PAS in action

The PAS

Skip hoist with bottom discharge

This model is ideal for applications with straight, direct access to the discharge point. The best solution for fast reliable delivery of materials. Filling, travelling and discharging are all combined in one operation. A closing flap is integrated into the skip bucket and offers a quick discharge action.

Its advantages:

- Robust construction
- Reliable
- Long lifetime
- **Fast**

Model PAS	250	375	500	750	1125	1500	1875	2250	3000	3375	3750	4500	5250	6000
Filling Litres max.	250	375	500	750	1125	1500	1875	2250	3000	3375	3750	4500	5250	6000
Filling kgs. max.	400	600	800	1200	1800	2400	3000	3600	4800	5400	6000	7200	8400	9600
Single winch – drive motor /kW	2,5/3	4,4/5,5	4,4/5,5	6/7,5	8,4/11	13,5/15	16/18,5	18,5/23	26/33	33/42	33/42	33/42	-	-
Double winch – drive motor /kW	-	-	-	-	-	-	-	-	-	-	-	-	2x28/36	2x28/36
Track U	100	100	100	120	140	160	160	180	200	240	240	240	240	240
Track width	900	900	900	1000	1100	1200	1200	1300	1400	1600	1600	1600	1600	1600
Empty weight /kg	550	650	650	850	1500	2000	2200	3500	4800	4800	6000	7400	7400	7400

PAK



Watch the Movie

Skip Hoist roll over discharge



PAK skip hoist roll over discharge

- Standard inclination 90°, special inclinations from 30° to 90° are available
- Standard-speed upwards and downwards 0,4 m/s, or upwards 0,4 m/s and 0,8 m/s downwards
- Drive unit with two synchronized geared motors, each with ventilated disk brake and single layered rope drum, available with frequency converter for infinitely variable speed
- Electronic rope monitor and double winch system for safe operation
- Double track system for accurate, consistent bucket travelling and smooth roll over discharge action

The PAK in action

The PAK

Skip hoist roll over discharge

PAK skip hoists offer maximum flexibility: This model can be used where a straight skip track is not possible. Obstacles, bends and variable inclines pose no problem for PAK skips. A dust protection flap is integrated into the frame which opens and closes automatically during discharge.

Its advantages:

- Robust construction
- Reliable
- Long lifetime
- Flexible

Model PAK	250	375	500	750	1125	1500	1875	2250	3000	3375	3750	4500	5250	6000
Filling Litres max.	250	375	500	750	1125	1500	1875	2250	3000	3375	3750	4500	5250	6000
Filling kgs. max.	400	600	800	1200	1800	2400	3000	3600	4800	5400	6000	7200	8400	9600
Double winch – drive motor /kW	1x 3,4/4	2x 3,4/4	2x 3,4/4	2x 3,4/4	2x 6/7,5	2x 6/7,5	2x 8,4/11	2x 8,4/11	2x 13,5/15	2x 13,5/15	2x 20/25	2x 20/25	2x 28/36	2x 28/36
Track U	2x100	2x100	2x100	2x140	2x160	2x160	2x160	2x200	2x240	2x240	2x240	2x240	2x240	2x240
Track width	900	900	900	1800	1900	2200	2200	2200	2520	2520	2520	2520	2520	2520
Empty weight /kg	1050	1300	1400	1950	2050	2800	3150	3950	4900	5150	5350	5550	7200	7400

PAKS

Dustfree Skip Hoist roll over discharge



Watch the Movie



PAKS Dustfree skip hoist roll over discharge

- Standard inclination 90°, special inclinations from 30° to 90° are available
- Standard-speed upwards and downwards 0,4 m/s, or upwards 0,4 m/s and 0,8 m/s downwards
- Drive unit with two synchronized geared motors, each with ventilated disk brake and single layered rope drum, available with frequency converter for infinitely variable speed
- Electronic rope monitor and double winch system for safe operation
- Double track system for accurate, consistent bucket travelling and smooth roll over discharge action
- Dust free – without air lines or additional dust removal system

The PAKS in action

The PAKS

Dustfree skip hoist roll over discharge

PAKS skip hoists offer completely dustfree transfer of material which cause dust problems. This model is designed to meet the most stringent demands of dust free operation. A unique docking facility allows the skip to be filled and discharged in a completely dust tight environment. Complicated dust protection systems along the track and air lines mounted on the skip bucket are no longer necessary.

Its advantages:

- Robust construction
- Reliable
- Long lifetime
- **Dustfree**

Model PAKS	250	375	500	750	1125	1500	1875	2250	3000	3375	3750	4500	5250	6000
Filling Litres max.	250	375	500	750	1125	1500	1875	2250	3000	3375	3750	4500	5250	6000
Filling kgs. max.	400	600	800	1200	1800	2400	3000	3600	4800	5400	6000	7200	8400	9600
Double winch – drive motor /kW	1x 3,4/4	1x 4,4/5,5	2x 3,4/4	2x 3,4/4	2x 6/7,5	2x 6/7,5	2x 8,4/11	2x 8,4/11	2x 13,5/15	2x 13,5/15	2x 20/25	2x 20/25	2x 28/36	2x 28/36
Track U	2x100	2x100	2x100	2x140	2x160	2x160	2x160	2x200	2x240	2x240	2x240	2x240	2x240	2x240
Track width	900	1100	900	1800	1900	2200	2200	2200	2520	2520	2520	2520	2520	2520
Empty weight /kg	1500	1750	1800	2300	2550	3150	3500	4300	5400	5500	5900	6400	8100	8300



● Pemat products – in action worldwide